

# AUKI | S116

Hee Welling | 2015



# AUKI

Hee Welling | 2015

There are moments during the day that go beyond a right angle and that seek the sinuous embracing line that supports and relaxes the body. These are moments for the AUKI armchair. Just like a shell, its curved shape gently opens up to create a subtle armrest. The headrest and stool complete its sheer comfort and transform the chair into an elegant chaise-longue. A wide choice of base supports, for the two different complementary small tables, square and round, enhances this perfectly versatile armchair.

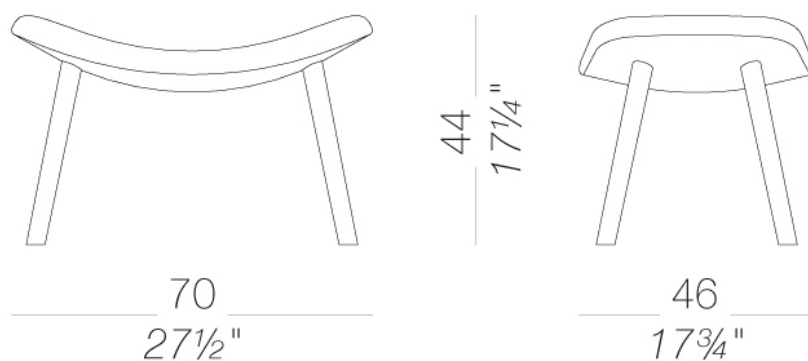


# AUKI

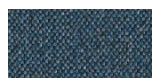
Hee Welling | 2015

## | S116 footrest upholstered with wood legs

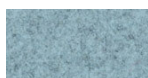
Footstool with internal metal frame, upholstered with fire-retardant moulded polyurethane foam and covered with fabric, soft leather or eco-leather. Four legs in solid wood in several finishes. Glides in felt.



### upholstery



fabric  
Main Line Flax -  
Grade. B  
57 Colors



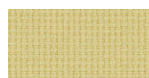
fabric  
Blazer - Grade. C  
77 Colors



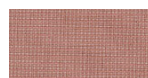
fabric  
Chili - Grade. A  
47 Colors



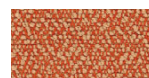
fabric  
Umber - Grade. B  
36 Colors



fabric  
Nobel - Grade. C  
30 Colors



fabric  
Naveli - Grade. C  
24 Colors



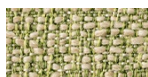
fabric  
Fiocco - Grade. B  
34 Colors



fabric  
Atrium - Grade. C  
16 Colors



fabric  
Panama - Grade. A  
48 Colors



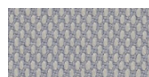
fabric  
Sorrento - Grade. B  
22 Colors



fabric  
Hallingdal 65 - Grade  
C  
58 Colors



fabric  
Canvas 2 - Grade C  
45 Colors



fabric  
Steelcut Trio 3 -  
Grade D  
54 Colors



fabric  
Remix 3 - Grade C  
72 Colors



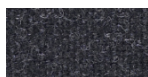
fabric  
Fiord 2 - Grade C  
39 Colors



fabric  
Divina MD - Grade D  
27 Colors



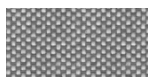
fabric  
Divina Melange 3 -  
Grade D  
38 Colors



fabric  
Tonica 2 - Grade C  
39 Colors



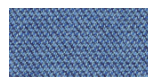
fabric  
Medley - Grade A  
37 Colors



fabric  
Maya - Grade A  
43 Colors



fabric  
Jet - Grade A  
66 Colors



fabric  
Capture - Grade B  
60 Colors



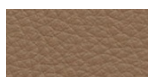
fabric  
Crisp - Grade B  
40 Colors



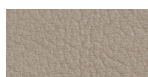
fabric  
Iliris - Grade B  
34 Colors



fabric  
Steelcut 3 - Grade D  
40 Colors



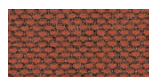
soft-leather  
Soft-leather  
17 Colors



ecoleather  
Valencia - Grade B  
72 Colors

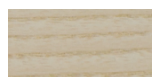


fabric  
Grain - Grade. B  
50 Colors

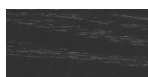


fabric  
Re-wool - Grade C  
24 Colors

### frame



wood  
natural ash  
1 Colors



wood  
black open pore  
1 Colors

**consult the portfolio for the range of colors, fabrics, eco-leather, soft-leather.**

### use and maintenance instructions

Clean all parts in wood, leather, fabric and metal with a damp cloth or a diluted neutral cleaner. Do not use cleaners with alcohol, bleach, solvent or abrasive products. Any liquid spilt on the product must be wiped up immediately. When lifting or moving the product, hold it on the structure and not under the seat. The product should not be subjected to unbalanced weights, as it is designed for a proper rest on the foothold (on four legs or on the base). Our company relieves from any responsibility in case of damage caused to fragile floors. Avoid any improper use of the product: do not step on the product, on the footrest or on the armrests. Avoid any movements that could compromise the proper functionality of the product or the safety of the users. Wood and leather, being natural materials, could be easily damaged. Small impurities or imperfections are within quality standard range. Do not expose the product to weather conditions or atmospheric agents, nor to heat sources over 40°C. Also products for outdoor use could be afflicted by atmospheric agents. The product could undergo possible exterior changes due to particular exposure to heat, humidity and saltiness. An appropriate and frequent maintenance and cleaning of the product enhances its durability. The product could change colour and shade, if exposed to direct sunlight. Maintenance has to be carried out by experienced staff. Dispose of the package only after assembling the product, in order to avoid the loss of ironmongery and components. Once the product has been dismantled, the product itself or its components must be given to the public garbage disposal system, according to the legislation in force.